



## Multi Fiber Assembly

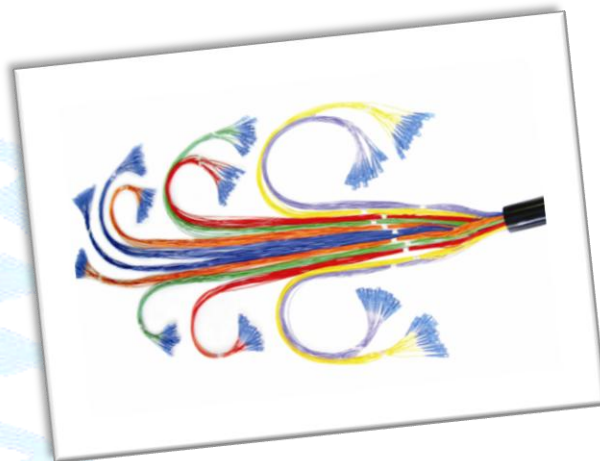
### Features and Benefits:

- Compliant with: JIS C-5973, IEC, Bellcore
- Optical performance 100% factory tested
- Customized assemblies available include of lengths, connector styles and performance
- Precision ceramic ferrule with endface geometry per IEC proposal

### Application:

- Telecommunication Networks
- CATV Networks
- Active device termination
- Local Area Networks

**\*\*Other Requirements like cable color, Strength member and cable could be changed/added according to customer request**



### Specification:

Characteristics	Conditions	Values
Insertion Loss	Against Reference connector	<0.2dB
Return Loss	PC	>45dB
	UPC	>55dB
	APC	>65dB
Durability	500times	<0.2dB
Temperature Cycling	-40 ~ +80°C(42Cycles)	<0.2dB
Humidity Cycling	75°C, 95%/336Hr	<0.2dB
Vibration	10 ~ 55HZ(2Hr)	<0.2dB
Flex Test	0°→90°→0°→90°, 5kgf(100Cycles)	<0.2dB
Twist Test	ø0.9mm:0.7kgf, ø2.0mm :1.53kgf	<0.2dB
Straight Pull Test	100N load	<0.2dB
Impact	1.5m drop, 8times	<0.2dB

**\*\*Customized Specification is available upon request**



# ORNET



## Ordering Information:

